

RTX-30

LOW PROFILE

HYDRAULIC TORQUE WRENCH

Pressure/Torque Conversion Chart

How to use this chart

- 1** Find the closest torque value for your application, either in ft-lbs or in Nm.
- 2** Set the pressure on the pump that corresponds to the torque value. *Please ensure that the gauge calibration certificate is current.*
- 3** Appreciate the powerful torque output and the accuracy of the RTX-30. Enjoy the hands-free feature and work from a safe distance. *Your safety is our main priority.*

Scan the code to see how to use this document, or go to rapidtorc.com/torque_setup

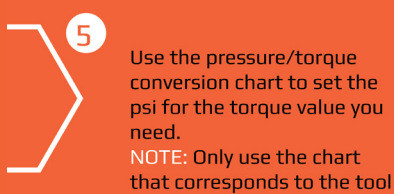
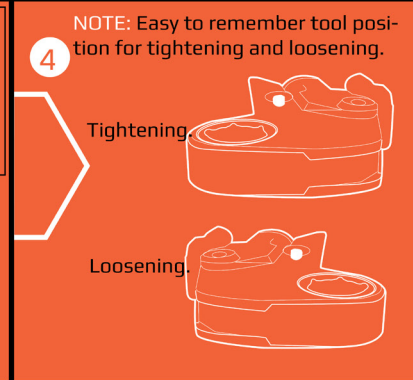
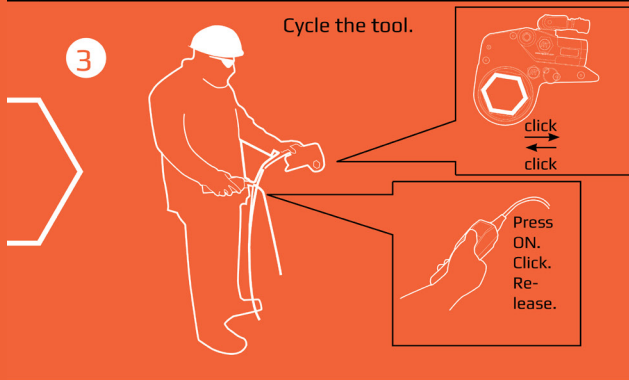
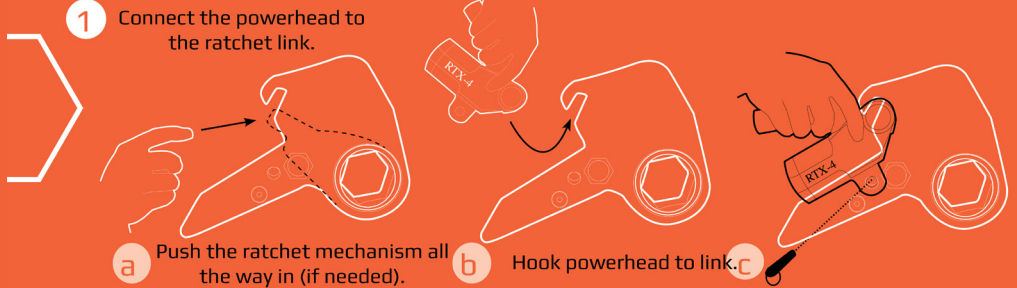


RAPID-TORC®
Part of the Atlas Copco Group

email support@rapidtorc.com
website www.rapidtorc.com

PSI	FT.LB.	BAR	NM
1500	4770	104	6467
1600	5088	110	6898
1800	5724	124	7761
2000	6360	138	8623
2200	6996	152	9485
2400	7632	165	10348
2600	8268	179	11210
2800	8904	193	12072
3000	9540	207	12935
3200	10176	220	13797
3400	10812	234	14659
3600	11448	248	15521
3800	12084	262	16384
4000	12720	276	17246
4200	13356	290	18108
4400	13992	303	18971
4600	14628	317	19833
4800	15264	331	20695
5000	15900	345	21558
5200	16536	358	22420
5400	17172	372	23282
5600	17808	386	24144
5800	18444	400	25007
6000	19080	414	25869
6200	19716	427	26731
6400	20352	441	27594
6600	20988	455	28456
6800	21624	468	29318
7000	22260	482	30181
7200	22896	496	31043
7400	23532	510	31905
7600	24168	524	32767
7800	24804	538	33630
8000	25440	552	34492
8200	26076	565	35354
8400	26712	579	36217
8600	27348	593	37079
8800	27984	607	37941
9000	28620	620	38804
9200	29256	634	39666
9400	29892	648	40528
9600	30528	662	41390
9800	31164	676	42253
10000	31800	690	43115

LOW PROFILE QUICK SETUP



TOOL

POSSIBLE OVER PRESS

How to use this chart

1. Find the torque value on the left side of the chart.
2. Move horizontally across the chart to the psi value.
3. Move vertically down to the corresponding torque value.

POWERTOOL

Torque (ft-lb)	Torque (lb-ft)	Torque (kg-m)	Pressure (PSI)
10	1.36	0.14	20
20	2.71	0.27	40
30	4.07	0.41	60
40	5.42	0.54	80
50	6.78	0.68	100
60	8.13	0.81	120
70	9.49	0.95	140
80	10.84	1.08	160
90	12.20	1.22	180
100	13.56	1.35	200
110	14.91	1.49	220
120	16.27	1.62	240
130	17.62	1.76	260
140	18.98	1.89	280
150	20.33	2.03	300
160	21.69	2.16	320
170	23.04	2.30	340
180	24.40	2.43	360
190	25.75	2.57	380
200	27.11	2.71	400
210	28.46	2.84	420
220	29.82	2.98	440
230	31.17	3.11	460
240	32.53	3.25	480
250	33.88	3.38	500
260	35.24	3.52	520
270	36.59	3.65	540
280	37.95	3.79	560
290	39.30	3.92	580
300	40.66	4.06	600
310	42.01	4.20	620
320	43.37	4.33	640
330	44.72	4.47	660
340	46.08	4.60	680
350	47.43	4.74	700
360	48.79	4.87	720
370	50.14	5.01	740
380	51.50	5.14	760
390	52.85	5.28	780
400	54.21	5.41	800
410	55.56	5.55	820
420	56.92	5.68	840
430	58.27	5.82	860
440	59.63	5.95	880
450	60.98	6.09	900
460	62.34	6.22	920
470	63.69	6.36	940
480	65.05	6.49	960
490	66.40	6.63	980
500	67.76	6.76	1000



WARNING:

NEVER PLACE HANDS NEAR ACTION OR REACTION POINTS.
 ALWAYS WEAR HARD HAT, SAFETY GLOVES, GOGGLES, STEELTOE BOOTS AND EARPLUGS
 THE PUMP AND THE TOOL SHOULD BE OPERATED BY THE SAME PERSON.